

**Douglas County  
Comprehensive Transportation Plan**

**Virtual Public Meeting #1**

December 3, 2020  
6:00 PM – 7:30 PM



# TONIGHT'S AGENDA

- Welcome
- Project Overview & Schedule
- Douglas County Today: Foundations Overview
- CTP Goals & Objectives Discussion
- Next Steps & Staying Involved



# MEETING GROUND RULES

- Meeting time: 6:00 PM – 7:30 PM
  - Your microphone will be MUTED
  - To post questions or comments throughout the presentation:
    - Zoom: Use the Q&A
    - Facebook Live: Post your questions/comments
  - Questions will be addressed at end of the presentation
  - There will be POLLING questions throughout the presentation (Zoom only)
- The meeting is being recorded and will be posted on the project website – [www.DouglasCountyCTP.com](http://www.DouglasCountyCTP.com)



# How to comment and ask questions?

The screenshot shows a Zoom meeting window. At the top, it says "You are viewing Fabricio Ponce's screen" and "View Options". The main content is a slide titled "MEETING GROUND RULES" with the following text:

- Meeting time: 6:00 PM – 7:30 PM
- Your microphone will be MUTED
- Use the Q&A to post questions or comments throughout the presentation
- Questions will be addressed at end of the presentation
- There will be POLLING questions throughout the presentation

Below the list, it says: "➤ The meeting is being recorded and will be posted on the project website – [www.DouglasCounty.com](http://www.DouglasCounty.com)". To the right of the text is a gavel icon. At the bottom right of the slide is a small logo for "GEILIA TAYLOR County". The Zoom control bar at the bottom includes "Mute", "Stop Video", "Participants", "Q&A" (circled in pink with a pink arrow pointing to it), "Share Screen", "Record", and "Leave".



**NOW LET'S HEAR  
FROM YOU!**



# PROJECT OVERVIEW & SCHEDULE

# WHAT IS A CTP & WHY IS IT IMPORTANT?

- **CTP = Comprehensive Transportation Plan**
- **Creates a roadmap** for how Douglas County will invest in all modes of transportation over next 30 years
- Makes it easier to compete for **federal and state funding**, which can help Douglas County's local dollars go further
- **Opportunity to collaborate** with local, regional & state partners
- **It's about time!** Last CTP was updated in 2009.
- **To hear from you!** Will engage residents and stakeholders in shaping future of Douglas County



# MEET THE TEAM

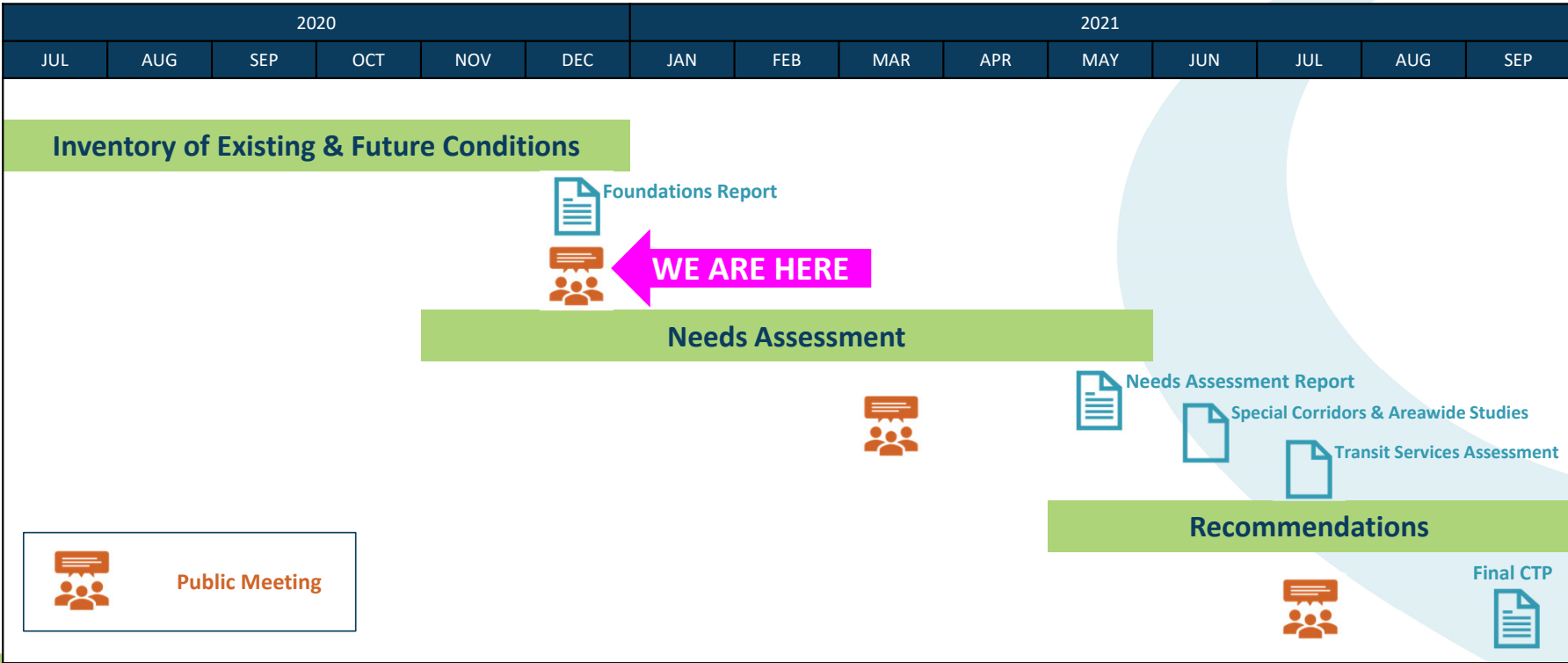


Atlanta Regional Commission





# HOW LONG IS THE CTP PROCESS?

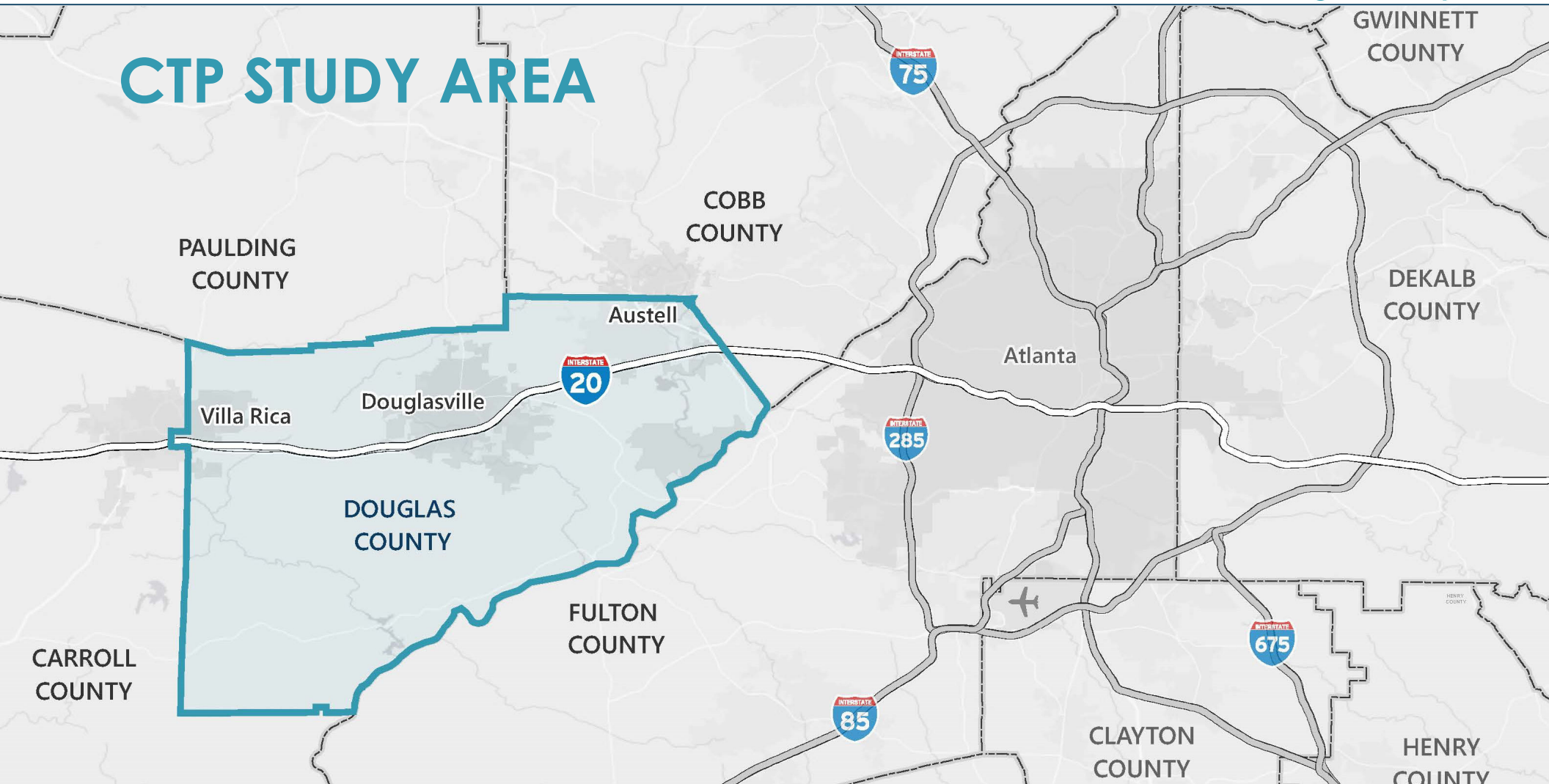


# FOUNDATIONS



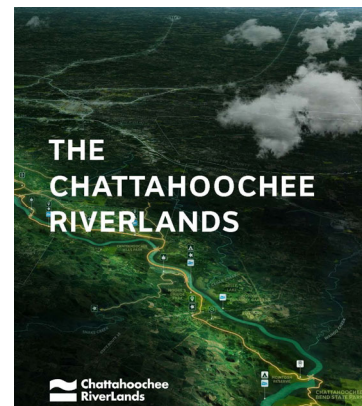
# CTP STUDY AREA

Douglas County

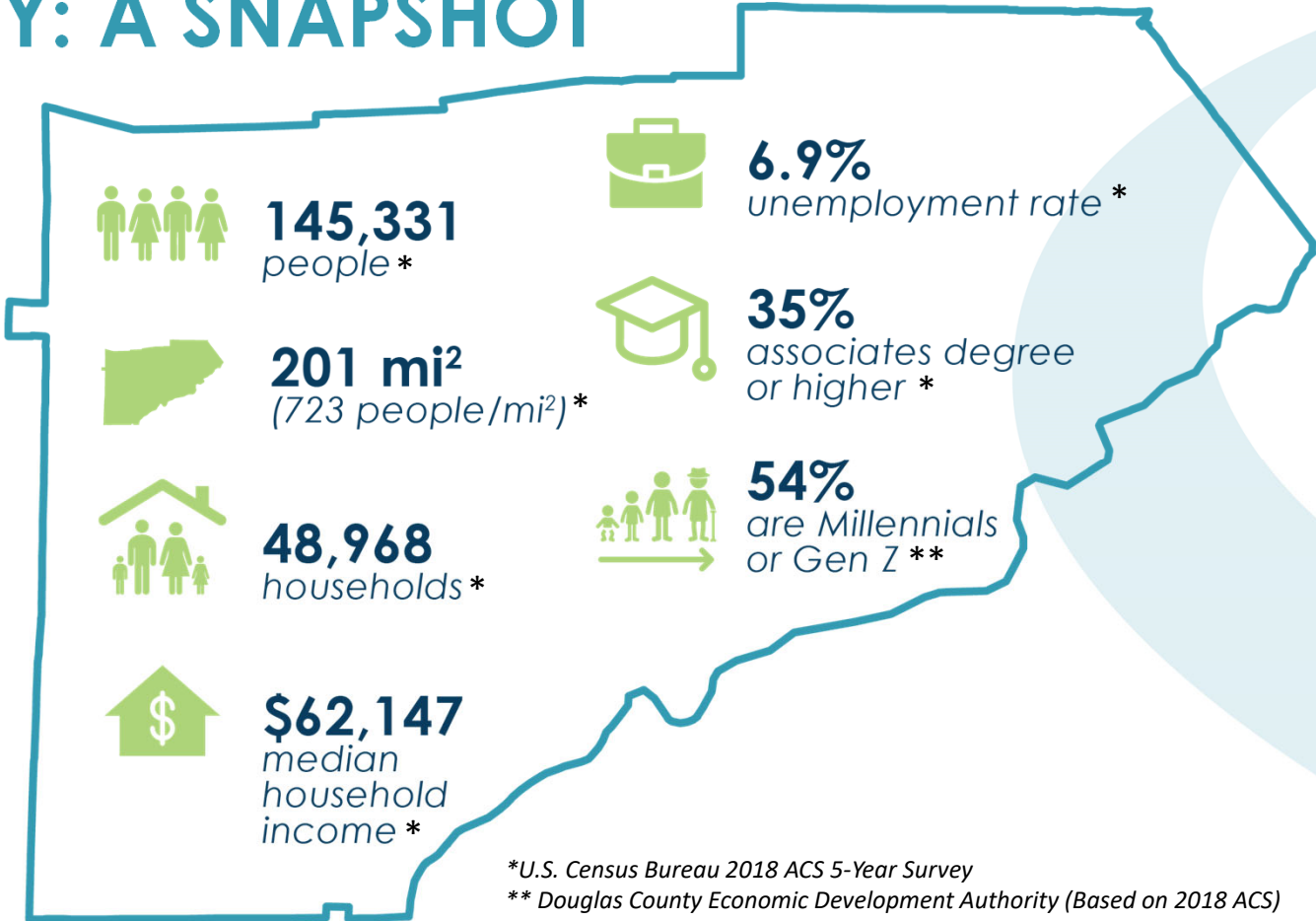


# PREVIOUS PLANS + STUDIES

- 15+ studies reviewed
- 10 completed since 2015
- 3 still under development
- 3 primarily focused on bike/ped improvements



# TODAY: A SNAPSHOT



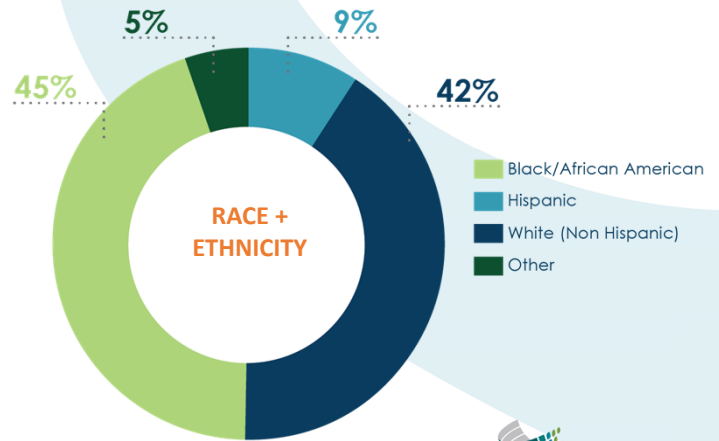
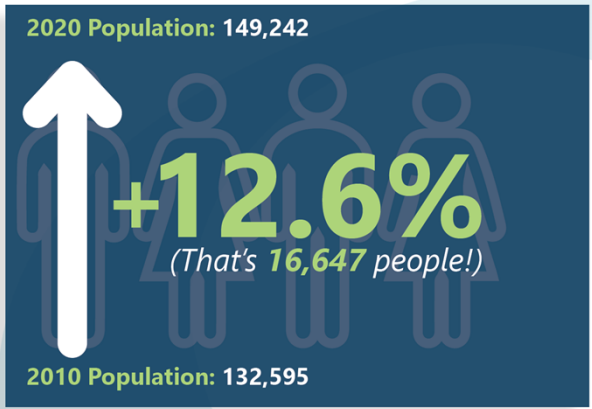
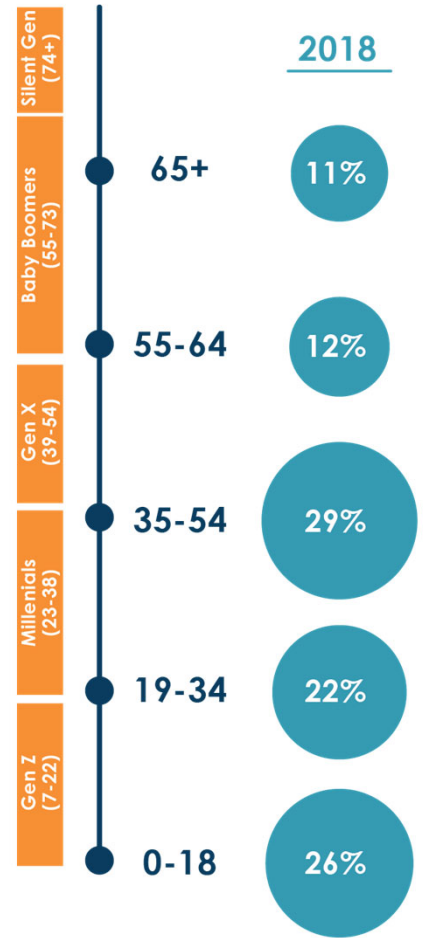
\*U.S. Census Bureau 2018 ACS 5-Year Survey  
 \*\* Douglas County Economic Development Authority (Based on 2018 ACS)



# WHAT'S CHANGED?

SINCE 2009, DOUGLAS COUNTY:

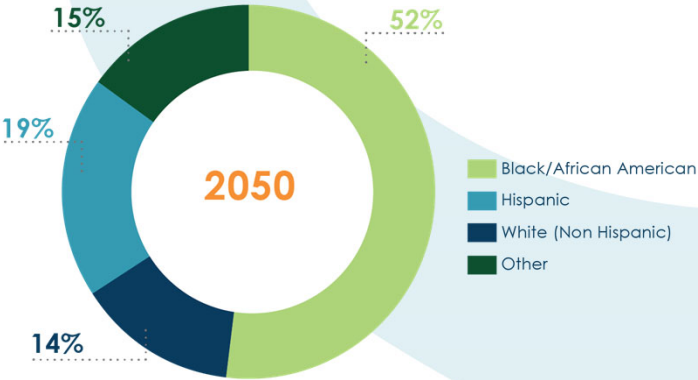
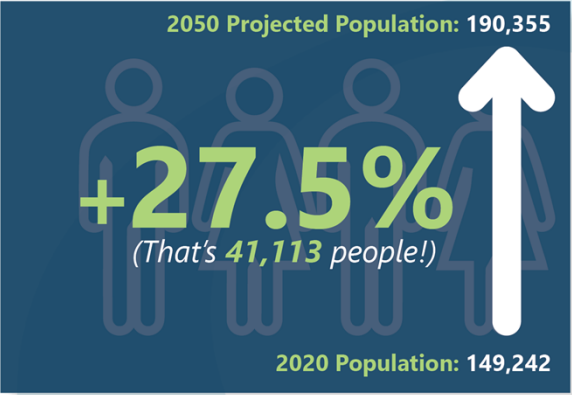
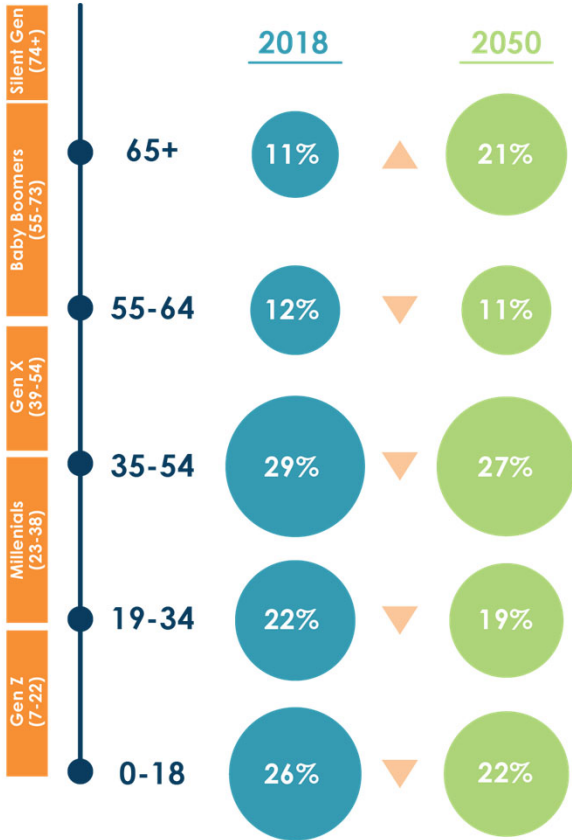
- Has grown larger in population
- Has grown more diverse in race/ethnicity
- Is getting younger!



# WHAT WILL CHANGE?

BY 2050, DOUGLAS COUNTY:

- Will keep growing in population
- Will continue growing even **more diverse** in race/ethnicity
- Will **get older** (less young people)



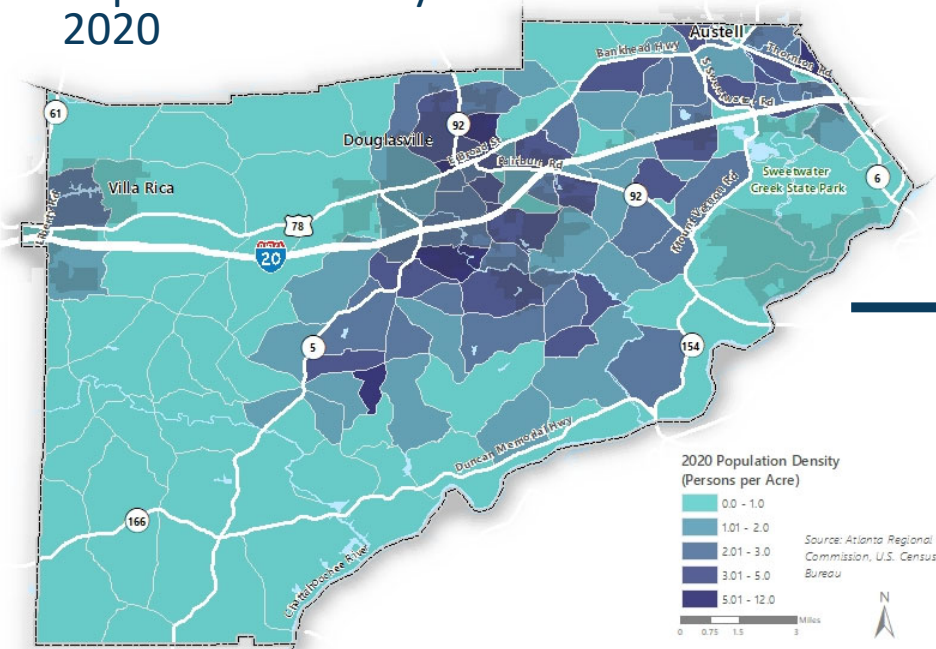
**NOW LET'S HEAR  
FROM YOU!**



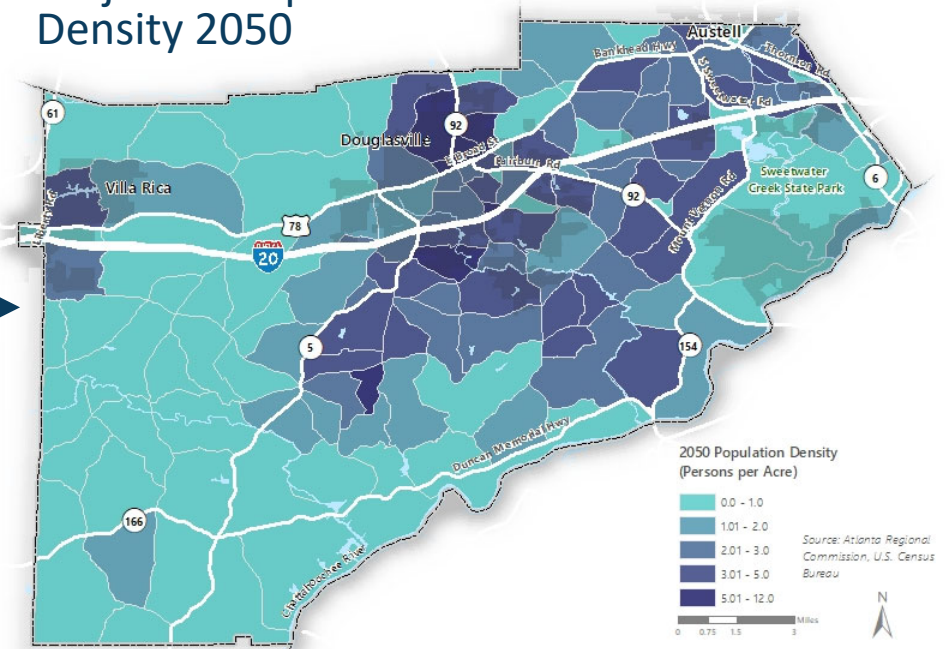


# DENSITY: LOOKING EAST

Population Density  
2020



Projected Population  
Density 2050

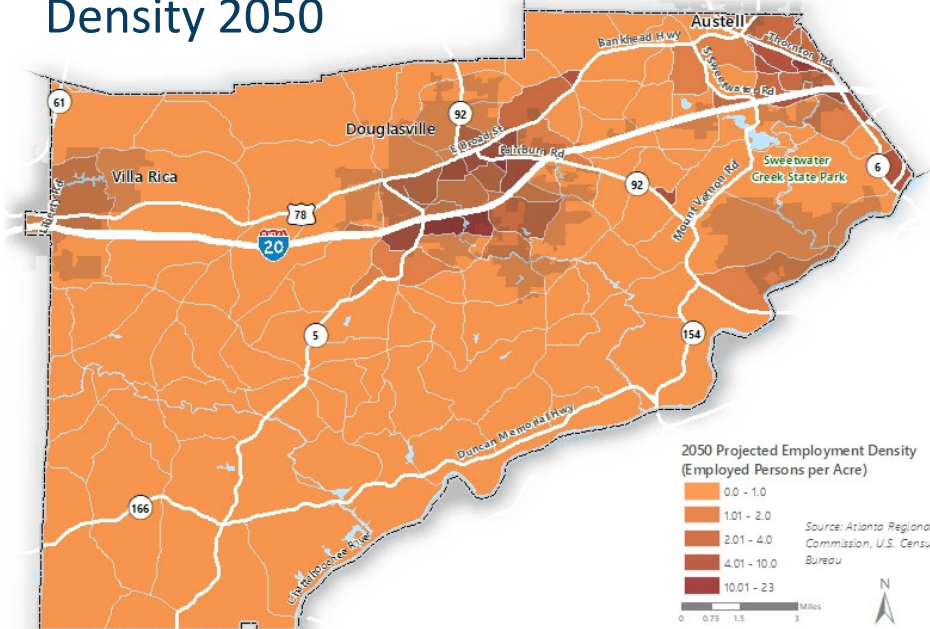
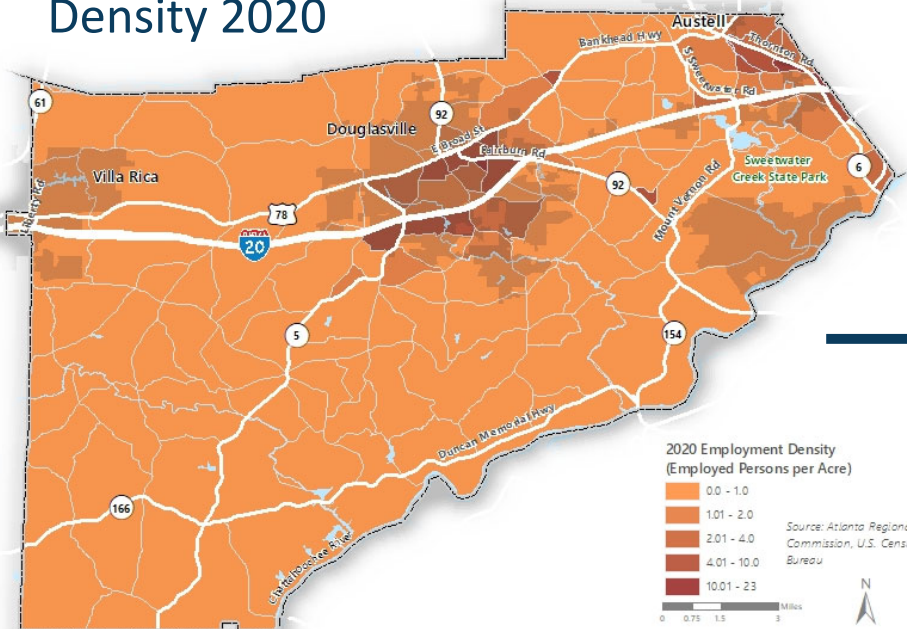


# JOBS

**+26% more jobs by 2050**  
56,092 (2020) → 70,826 (2050)

Employment Density 2020

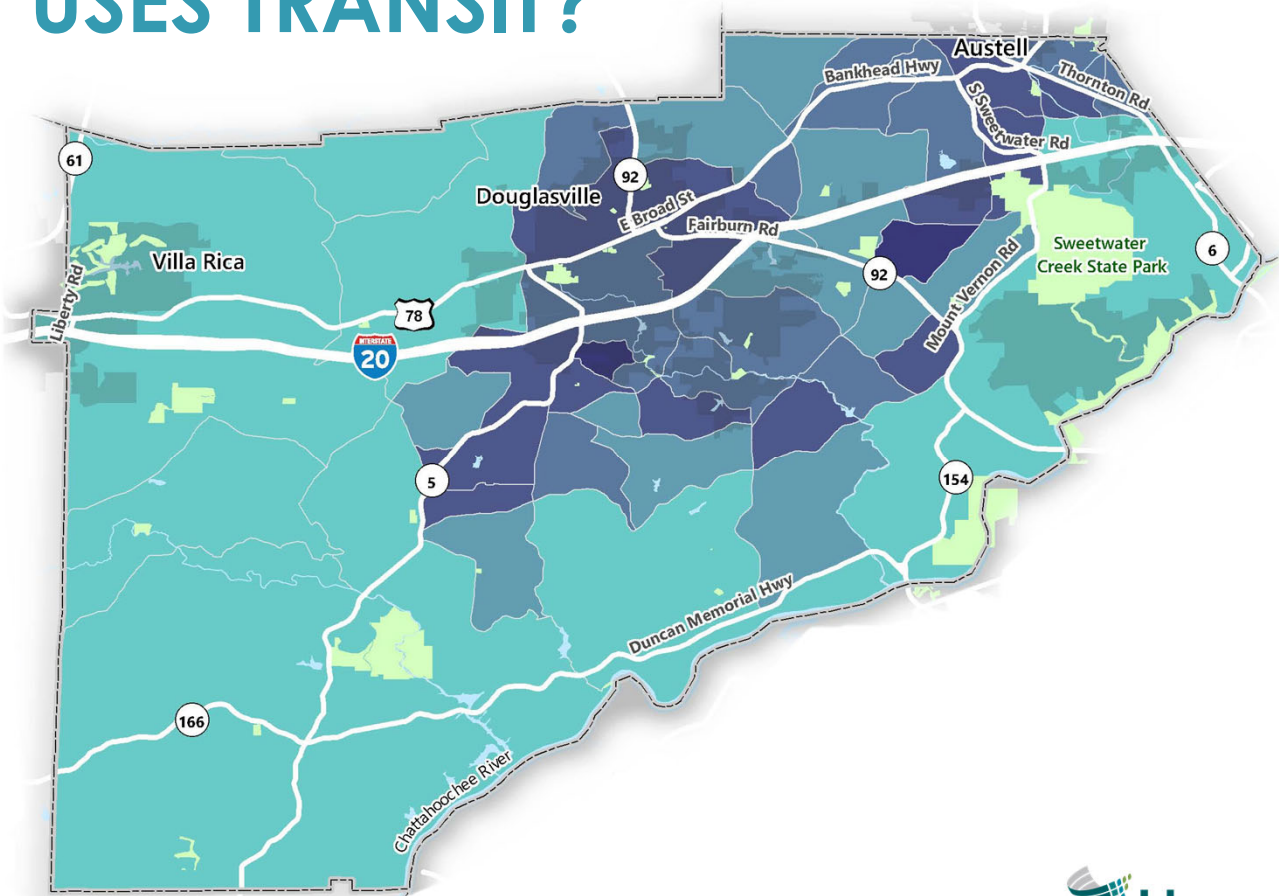
Projected Employment Density 2050



# WHO TYPICALLY USES TRANSIT?

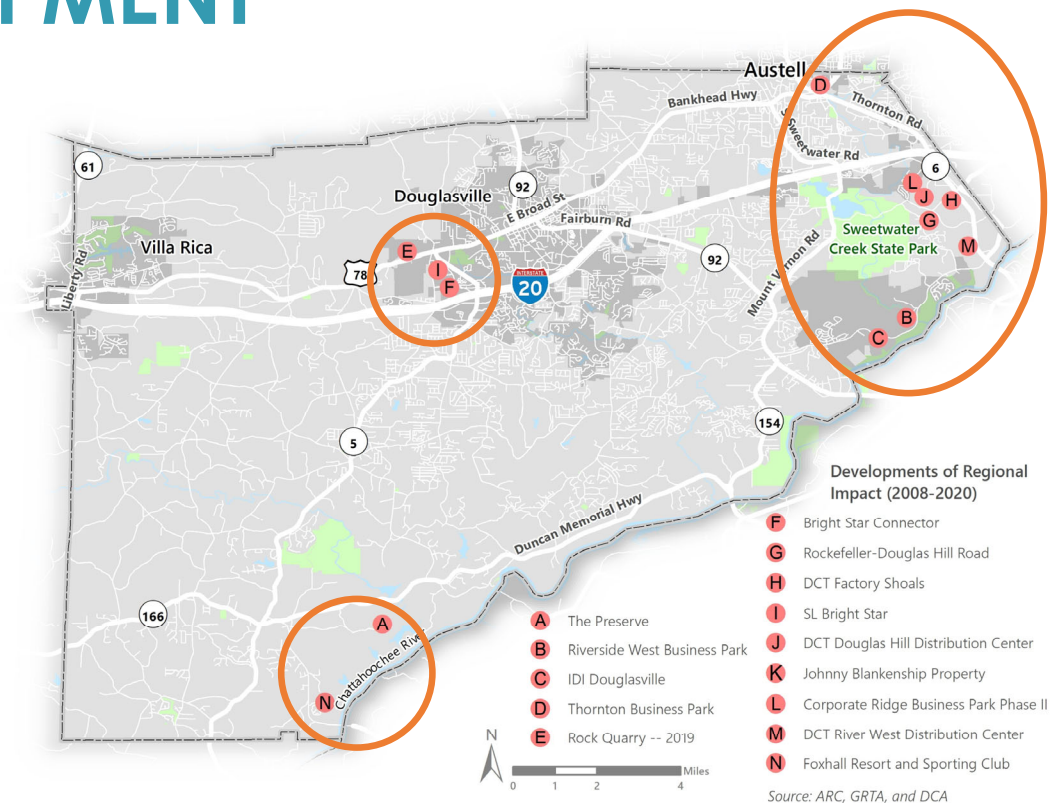
63 ( #i#kh#rsx@wrg

- Seniors (65+)
- Disabled individuals
- Low-income population
- Zero-car households

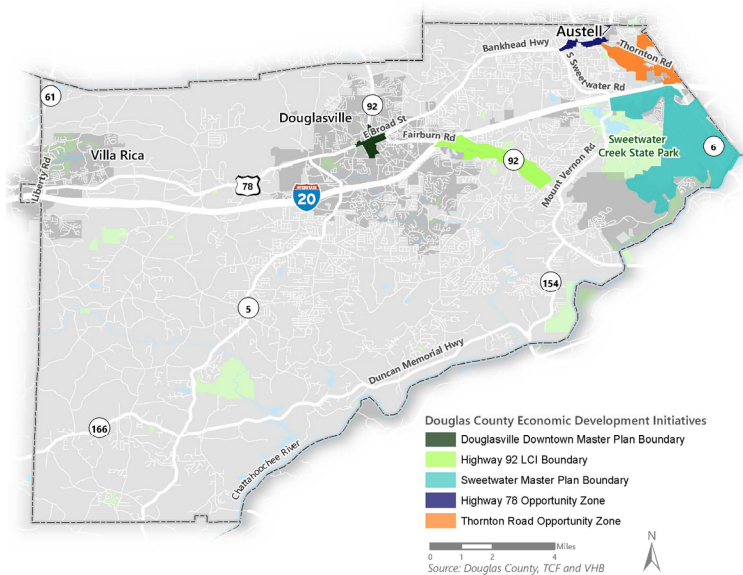


# LAND USE + DEVELOPMENT

- 14 Major Developments in the last 12 years
  - 3 mixed-use
  - 9 industrial
  - 2 quarry's
- Most located in the northeast corner of the county & increasing interest in southern Douglas County



# LAND USE + DEVELOPMENT



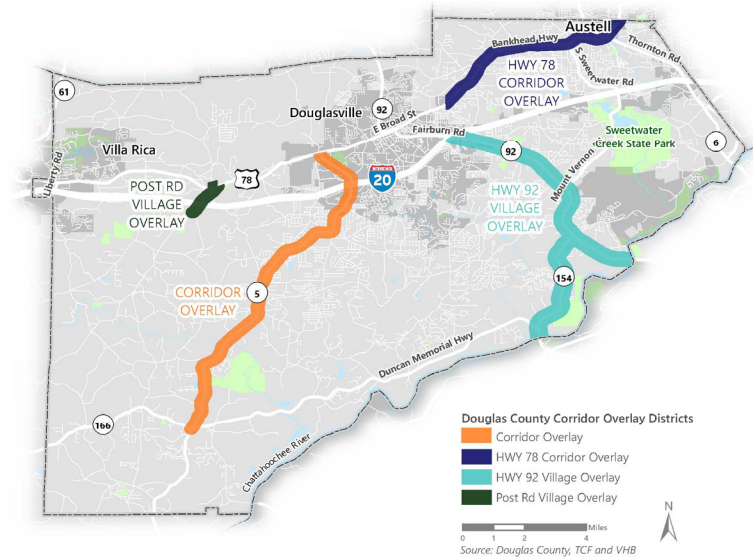
## PLANNING + ECONOMIC DEVELOPMENT INITIATIVES

- Focused on the **eastern** half of the county



## CORRIDOR OVERLAYS

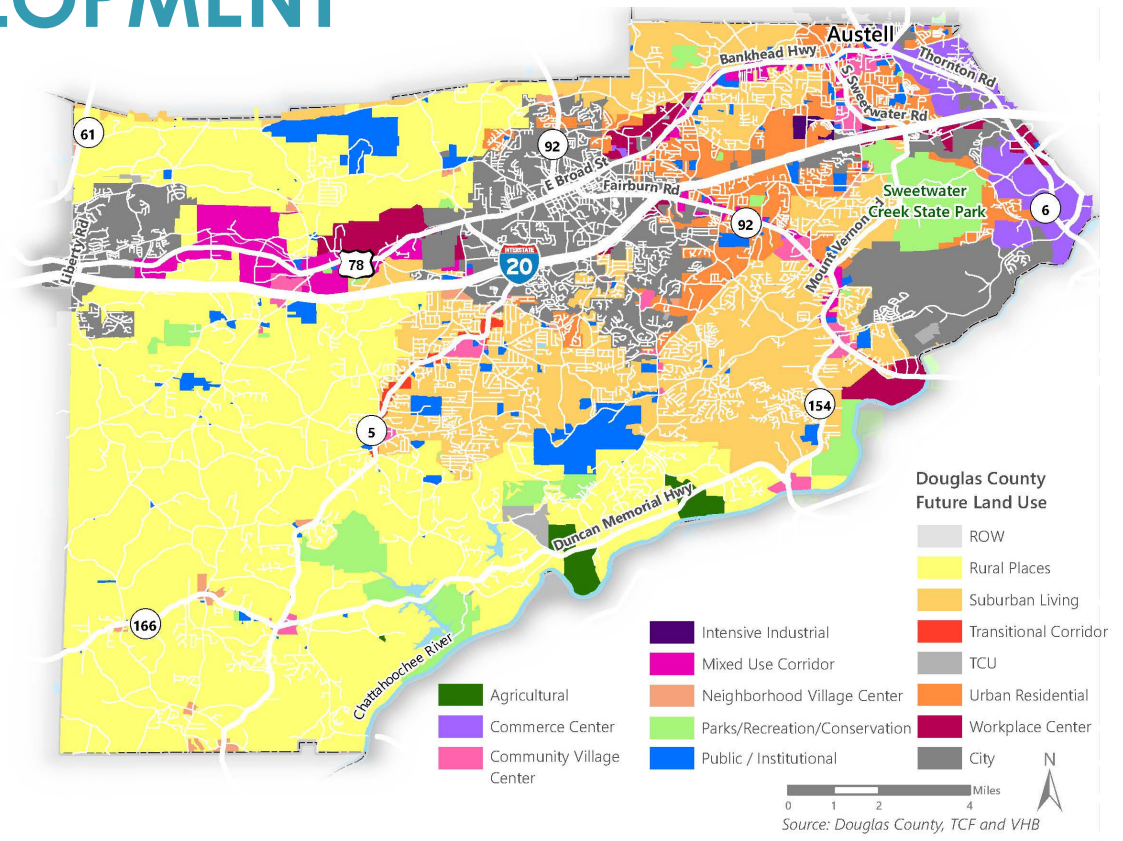
- Post Road Village Overlay amended in 2016
- Corridor Overlay amended in 2016
- SR 92 Village Overlay amended in 2016
- US 78 Corridor Overlay amended in 2011



# LAND USE + DEVELOPMENT

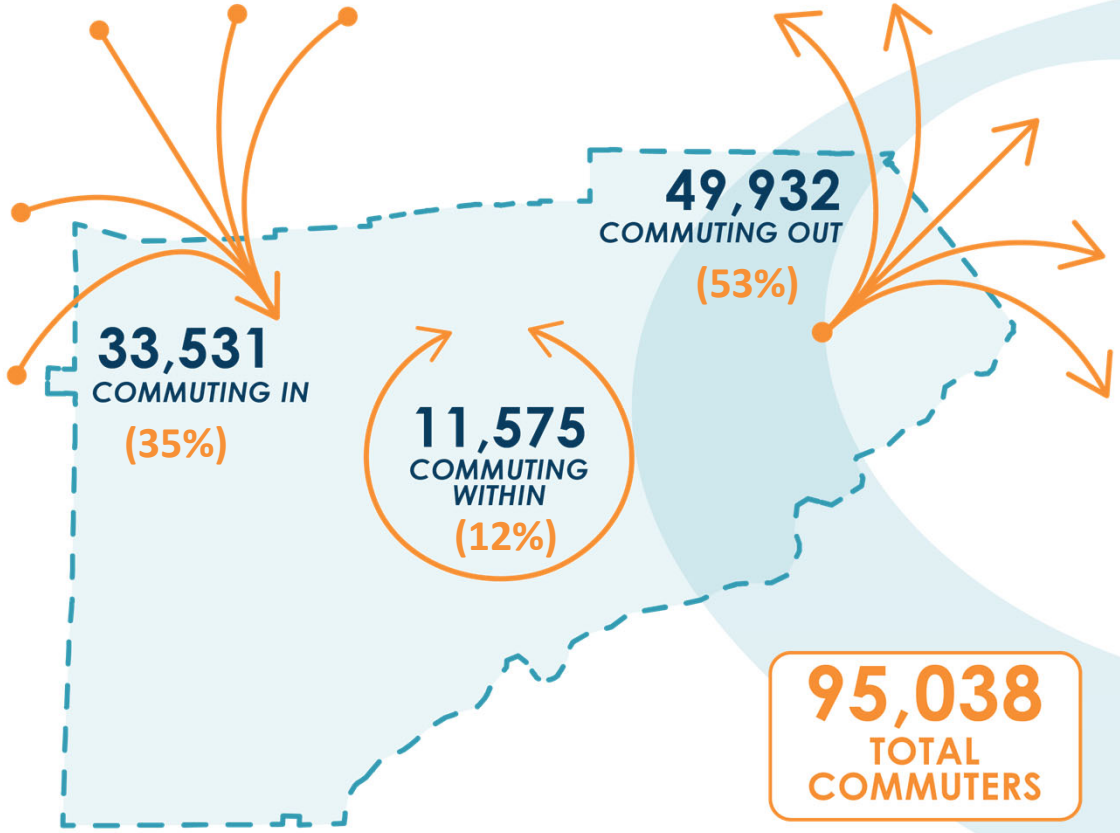
## FUTURE LAND USE

- Growth and development along **major transportation corridors** in the north and east
- Commitment to **preserving rural areas** in the south and west



# TRAVEL TRENDS

- More commuters are leaving the county for work than commuting in from other locations or traveling locally



# TRAVEL TRENDS

- Most trips are leaving the County.  
**So, where are these trips going?**
  1. Cobb County
  2. City of Atlanta
  3. Paulding County
  4. South Fulton
  5. Carroll County

EXTERNAL TRIPS THAT START OR END  
IN DOUGLAS COUNTY MAKE UP

**52%**

OF TOTAL DAILY TRIPS



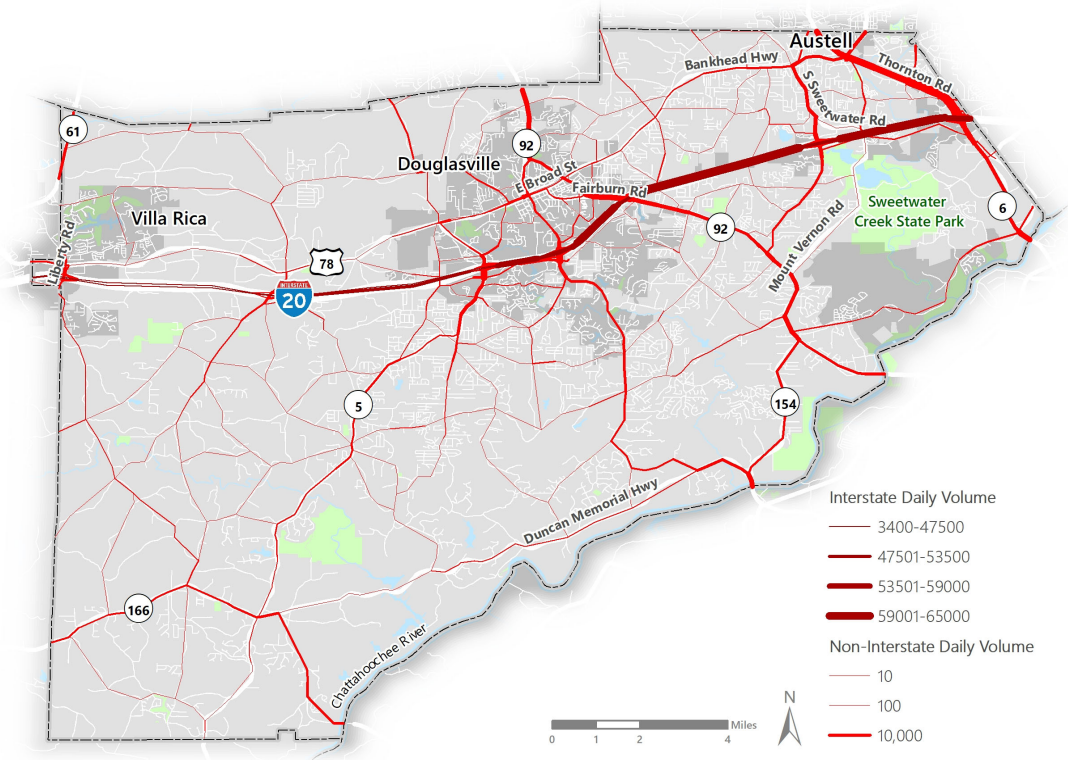
**NOW LET'S HEAR  
FROM YOU!**



# ROADWAY CONDITIONS

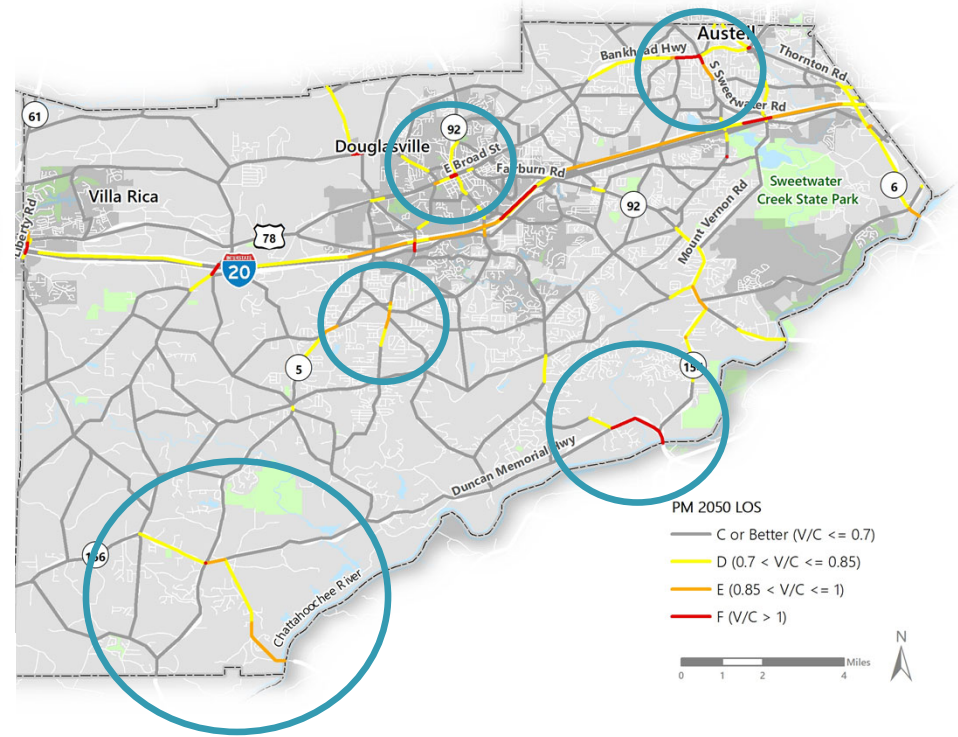
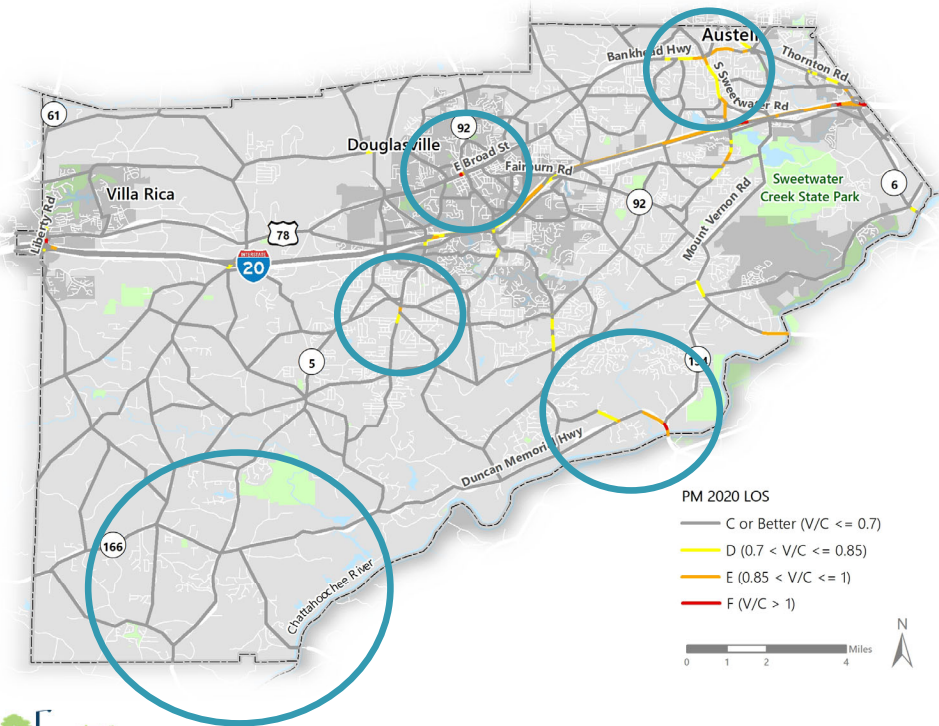
## TRAFFIC VOLUMES

- Major Transportation Arteries:
  - I-20
  - SR 6 (Thornton Road)
  - SR 92 (Fairburn Road)
  - SR 5 (Bill Arp Road)
  - Lee Road
  - Chapel Hill Road
  - Capps Ferry Road
  - US 78 (Veterans Memorial Hwy)



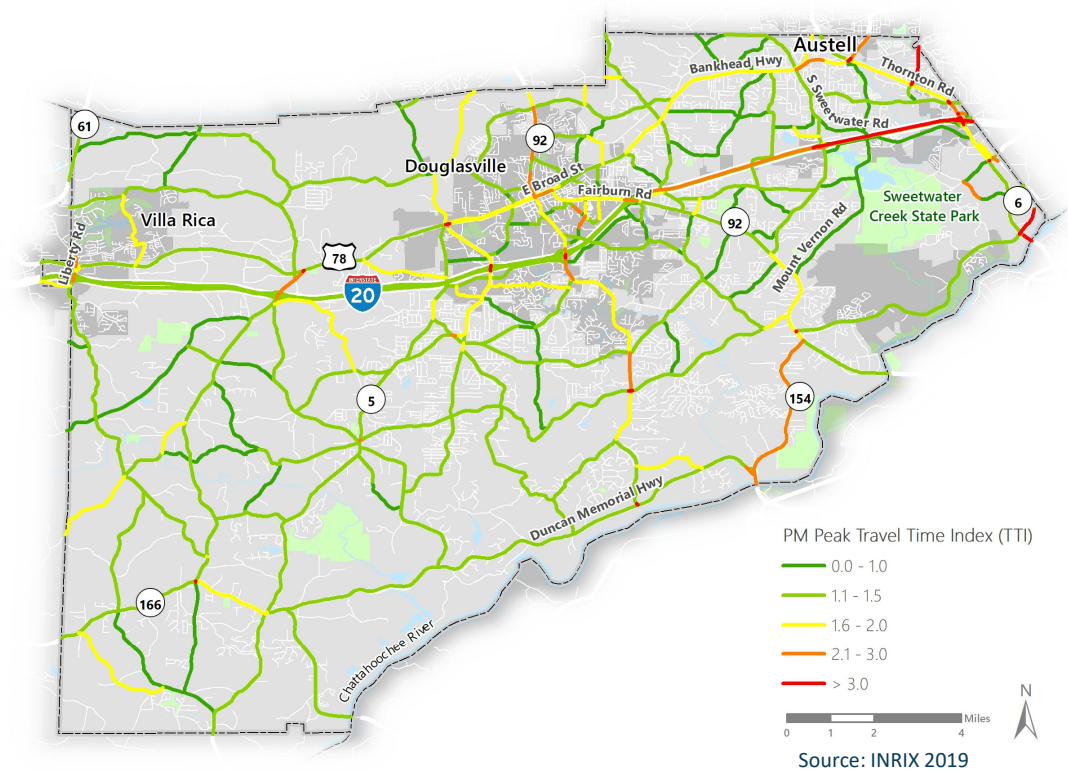
# TRAFFIC CONGESTION

## PM PEAK LEVEL OF SERVICE: EXISTING & FUTURE

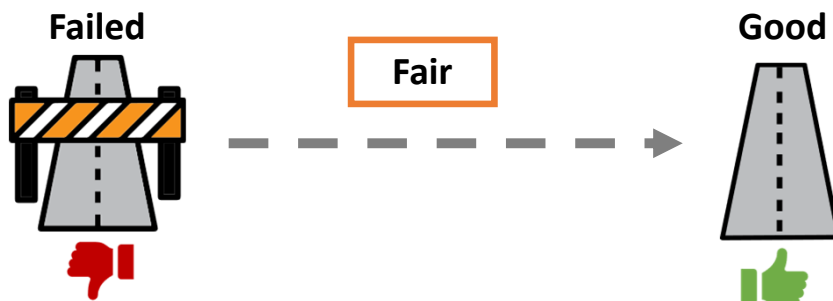


# KEY CONGESTED INTERSECTIONS

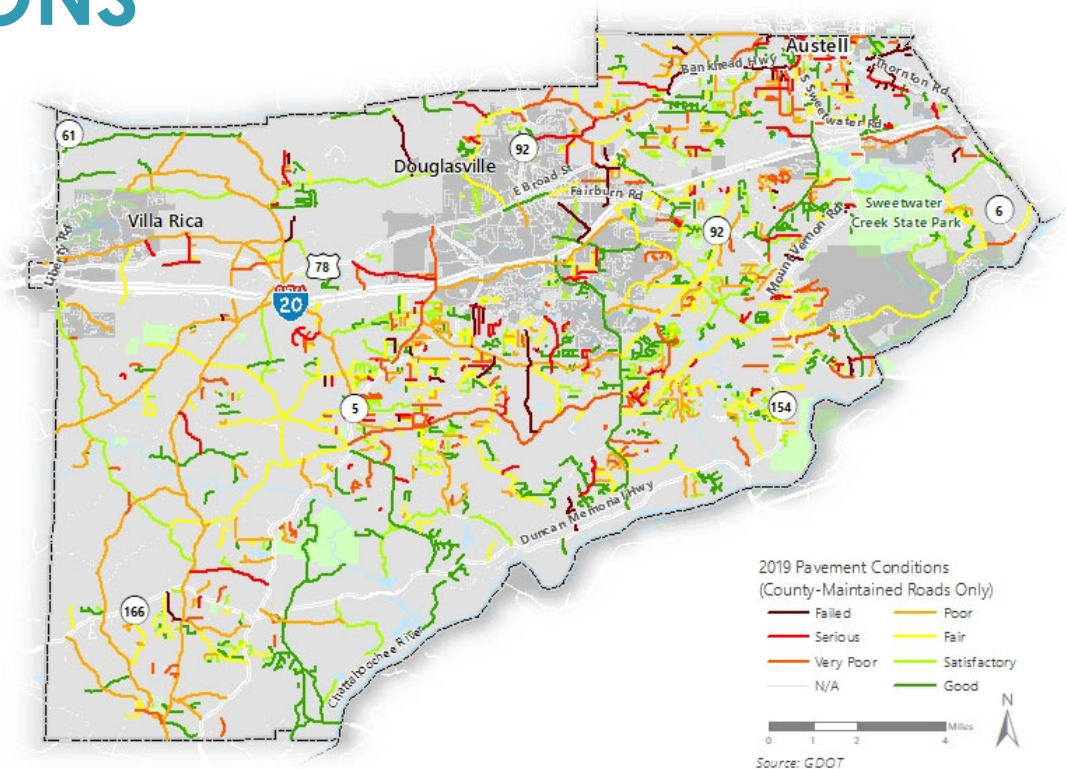
- **Top congested intersections:**
  - Chapel Hill Road at SR 166
  - Chapel Hill Road at Anneewakee Road
  - Factory Shoals Road at SR 6 (Thornton Rd)
  - US 78 (Veterans Memorial Hwy) at Bill Arp Road
  - US 78 (Veterans Memorial Hwy) at SR 6 (Thornton Road)
- **What do you think we're missing?**



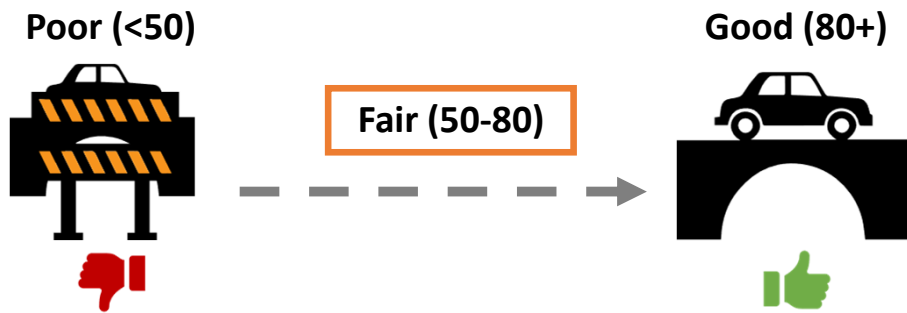
# ROADWAY CONDITIONS



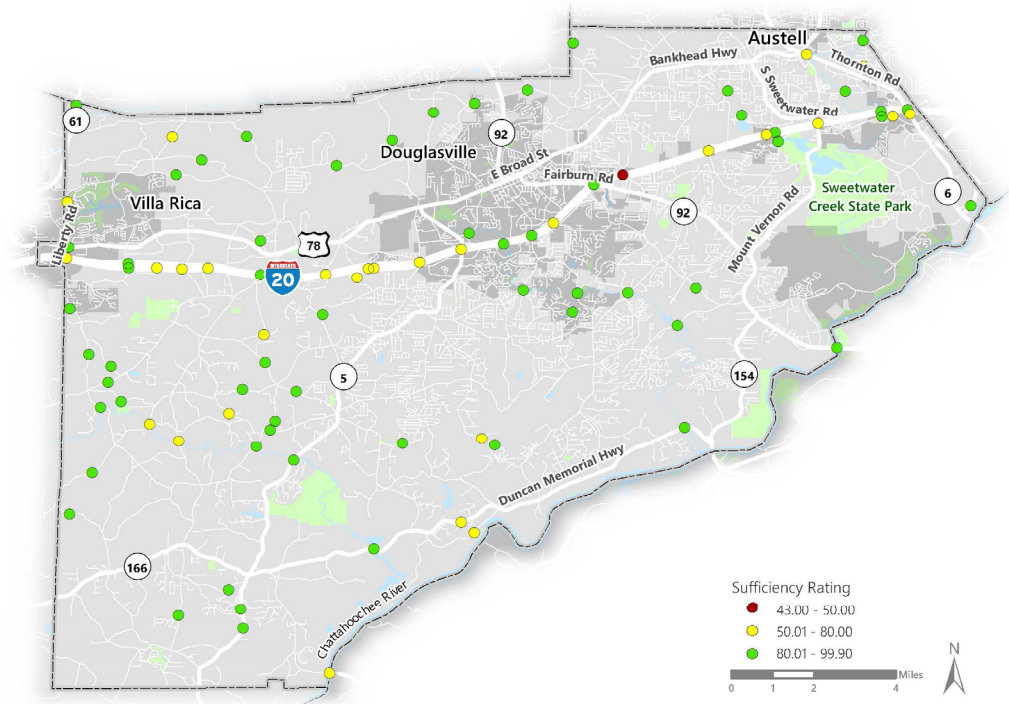
- Most roads are in “Fair” condition or better
- Only 5% of roadways are classified as being in Failed condition
- **This is good!**



# BRIDGE CONDITIONS



- One bridge with <50 score: **Burnt Hickory Road bridge over I-20**
- No bridges are classified as being in poor condition (NBI)
- **This is good news!**



# TRANSIT

- Transportation Services Study (2016)
- Connect Douglas branding
- Began fixed-route bus service
- Work with GCO to provide and encourage more commuting options



**CONNECT DOUGLAS**  
DOUGLAS COUNTY MULTI-MODAL TRANSPORTATION SERVICES

- COMMUTER VANPOOL
- FIXED-ROUTE BUS
- PARATRANSIT SERVICE
- CARPOOL MATCHING
- COMMUTER FACILITIES
- VOUCHER PROGRAM

# BICYCLES & PEDESTRIANS

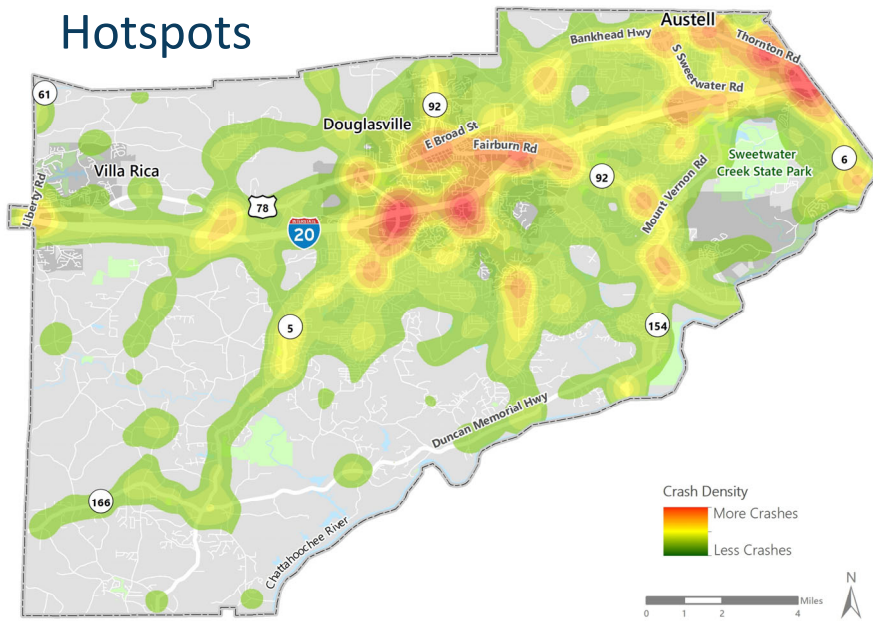
- **Currently**
  - **Limited bicycle infrastructure** mostly in downtown areas
  - **Limited sidewalk coverage** along arterial and collector roads across County
- **What's next?**
  - **Several bike/ped projects on the horizon**
    - Lee Road Widening Project
    - SPLOST Sidewalk Projects
    - Douglasville Ped & Bike Connectivity Plan
    - Northside Trail Plan
    - Chattahoochee Riverlands
      - 4 segments of the recommended trail alignment fall within/along the Douglas County line



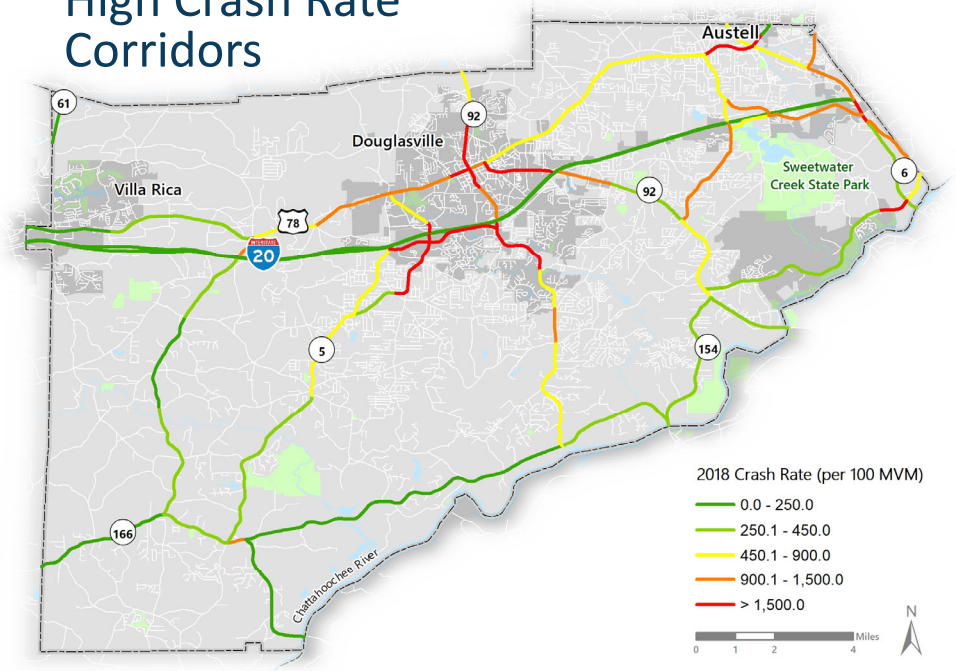


# SAFETY

## Automobile Crash Hotspots

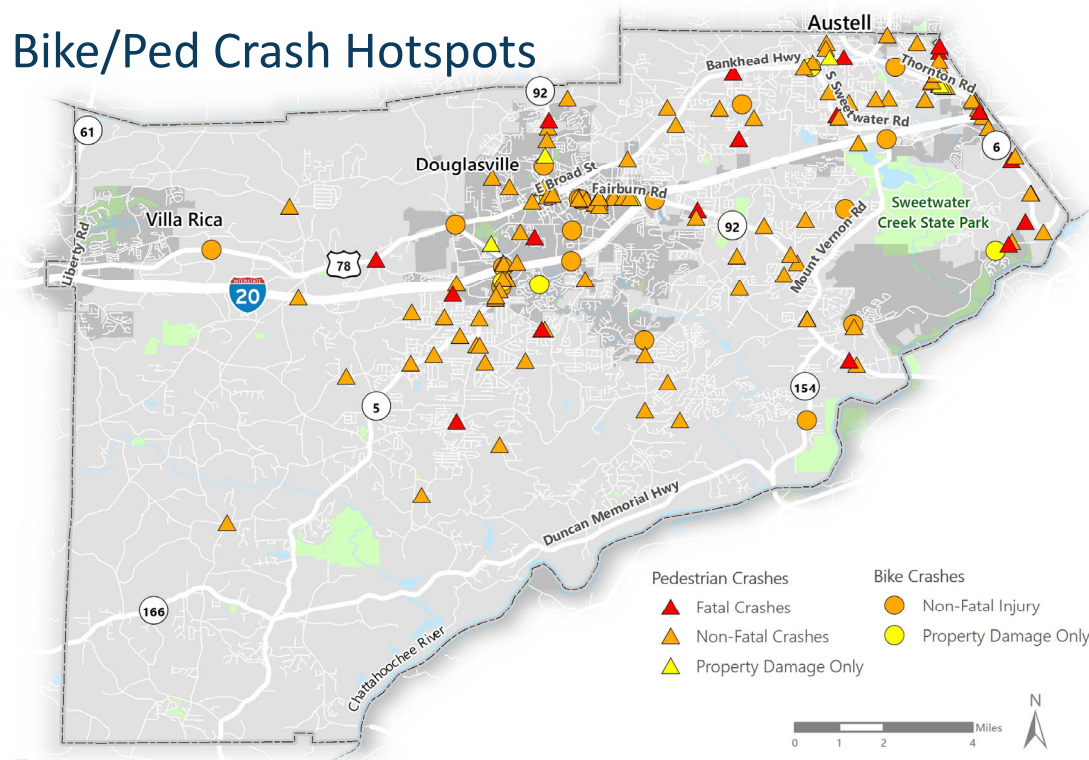


## High Crash Rate Corridors



# SAFETY

## Bike/Ped Crash Hotspots



## Top Three Crash Causes

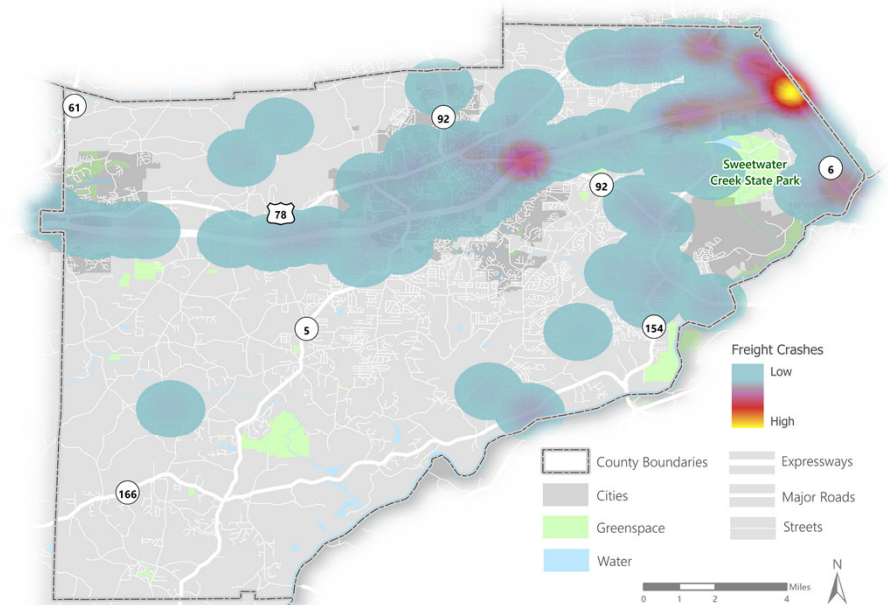
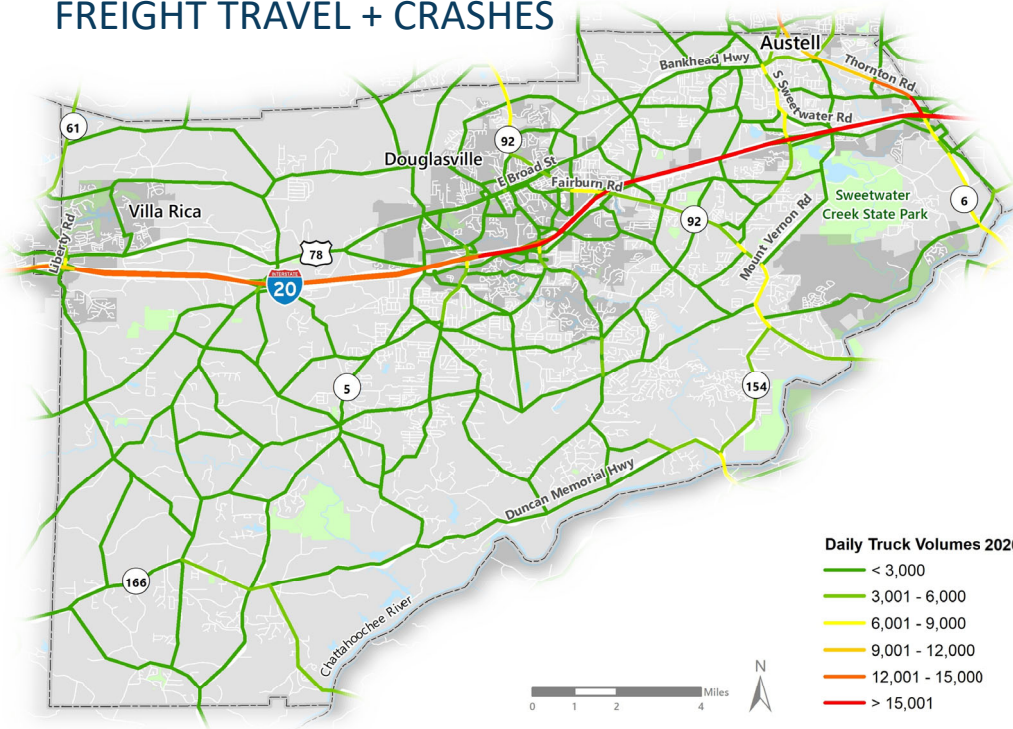


# 90%

of bike/ped crashes in the last 5 years resulted in injury or fatality

# GOODS MOVEMENT

## FREIGHT TRAVEL + CRASHES



Truck traffic makes up

# 10%

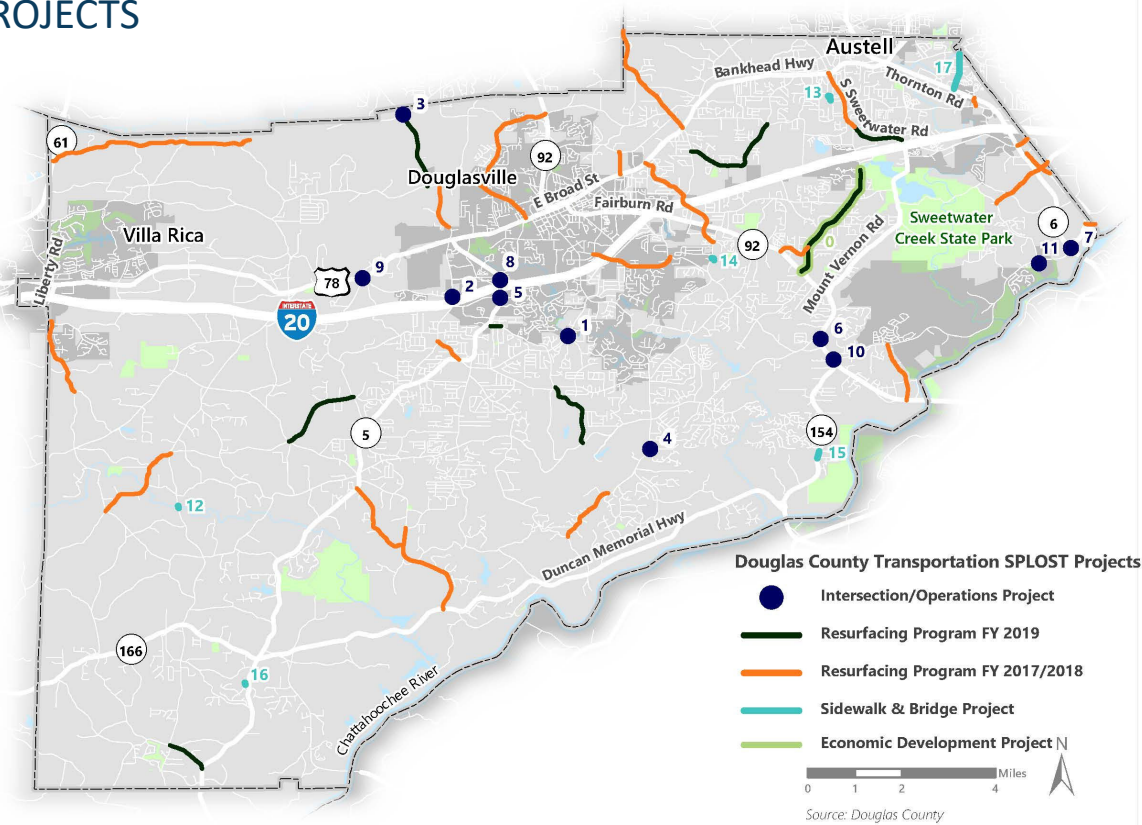
or more of traffic along I-20, Thornton Rd & portions of Ephesus Church Rd



# PLANNED + PROGRAMMED PROJECTS

## DOUGLAS COUNTY SPLOST PROJECTS

- Over half of all 2016 SPLOST projects have been completed to-date



**NOW LET'S HEAR  
FROM YOU!**



# GOALS + OBJECTIVES

# 2009 CTP GOALS + OBJECTIVES

- **Enhance safety and mobility for all travelers**
  - Incorporate multimodal facilities into transportation planning
  - Provide safe, accessible, and efficient transportation facilities
  - Prioritize and balance transportation projects with political and public support
- **Preserve and protect neighborhood integrity**
  - Preserve existing neighborhood characteristics and aesthetics
  - Maintain consistency with comprehensive land use plans
  - Implement density appropriate facilities
- **Preserve the environment**
  - Incorporate connectivity to greenways
  - Identify priority environmental resources
  - Sustain water quality
- **Promote economic development**
  - Focus new developments in economically depressed areas
  - Locate transportation facilities near economic development activities
- **Encourage public involvement**
  - Provide updated information through various media in accessible locations
  - Offer multiple opportunities for participation



# GOAL AND OBJECTIVES DISCUSSION





**NOW LET'S HEAR  
FROM YOU!**



# GOAL AND OBJECTIVES DISCUSSION

**Sustainability**

**Connectivity**

**Increased  
Density**

**What's missing?**

**Increased  
Transit Options**

**Pedestrian  
Infrastructure**

**Bike  
Infrastructure**

**Travel Time  
Reliability**



**NOW LET'S HEAR  
FROM YOU!**



# NEXT STEPS



# WHAT'S NEXT?

- Engagement
  - Stay tuned to the project website!  
[www.DouglasCountyCTP.com](http://www.DouglasCountyCTP.com) →
  - Public electronic survey (check the website)
  - Follow-up email
  - Next Public Meeting: March 2021
- Continue Systemwide Needs Assessment
  - Special Corridors & Areawide Studies
  - Transit Services Assessment



# QUESTIONS?